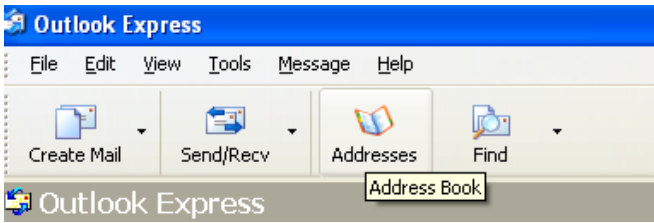


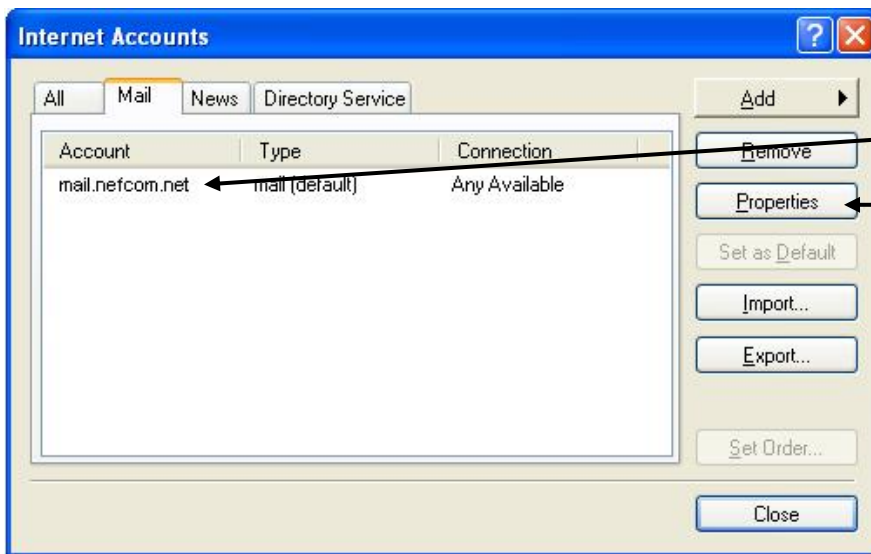
Outlook Express

Open up Outlook Express



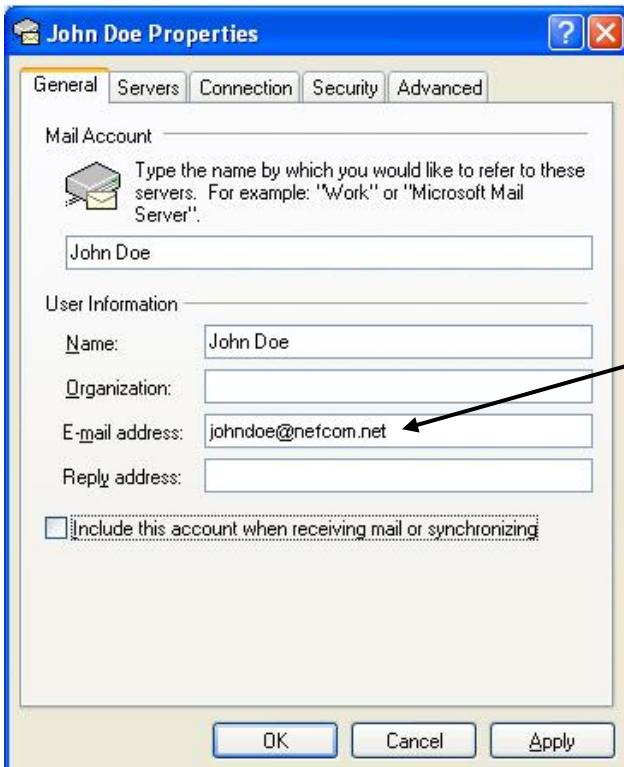
From the Menu Bar

Tools to Accounts - Click on Mail Tab



Click on mail.nefcom.net (default)

Click on Properties button

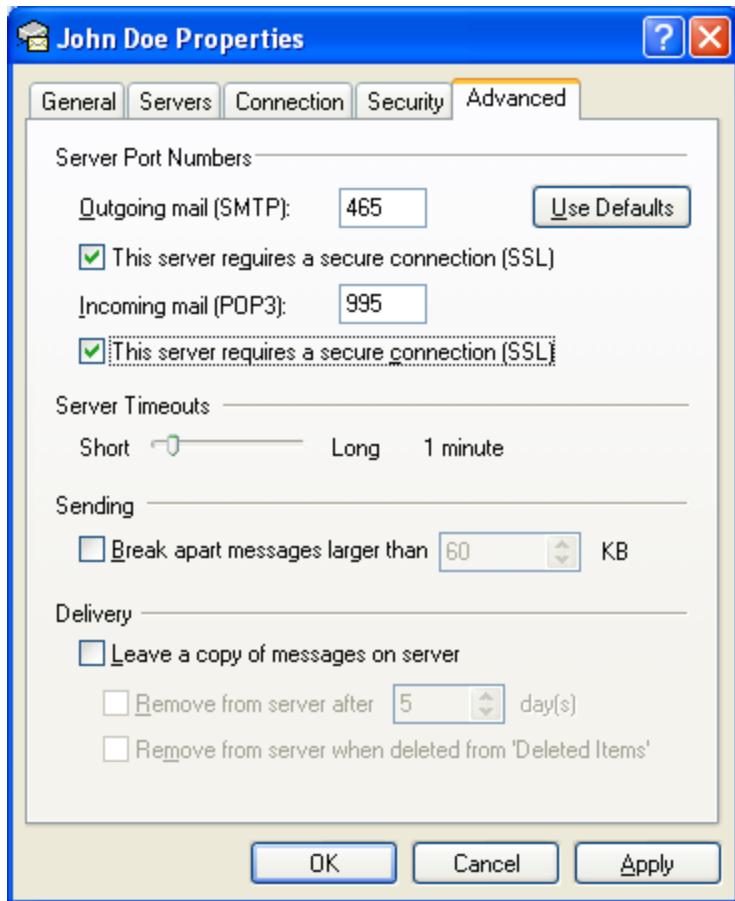


Click on the **General** tab

Make Changes in **Red**:

User Information

E-mail address: username@nefcom.net



Click on the **Advanced** tab

Make Changes in **Red**:

Outgoing mail (SMTP): 465

✓ This server requires a secure connection (SSL)

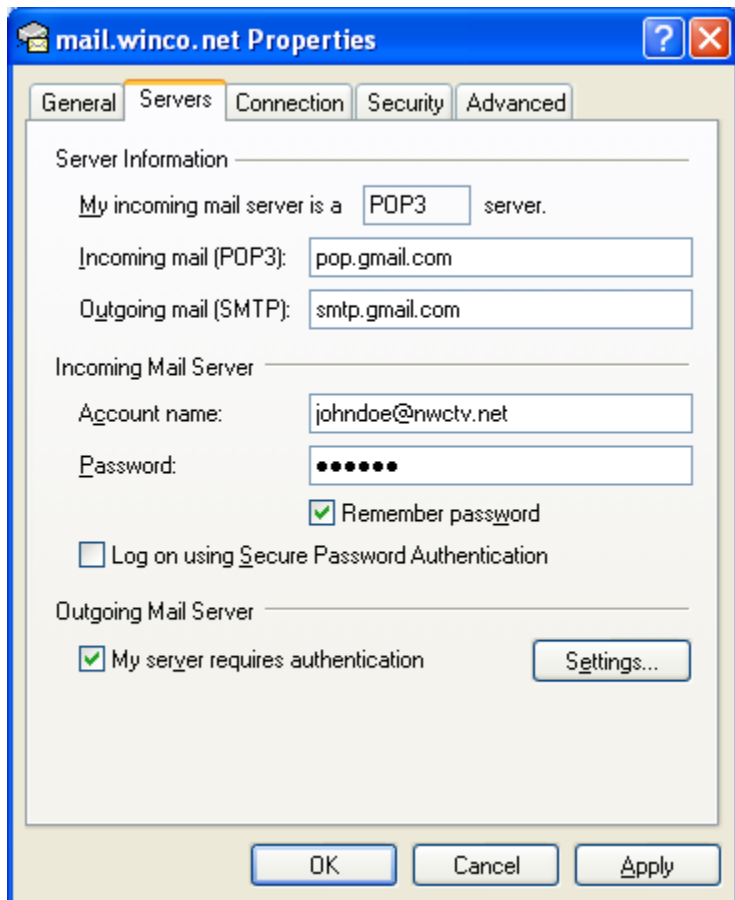
Incoming mail (POP3): 995

✓ This server requires a secure connection (SSL)

*The order of **Outgoing** and **Incoming** mail server fields varies by version. Make sure you enter the correct information in each field.

Click on the **Apply** button

Click on the **OK** button



Click on the **Servers** tab

Make Changes in **Red**:

Server Information

My incoming mail server is a **POP3** server.

Incoming mail (POP3): **mail.nefcom.net**

Outgoing mail (SMTP): **smtp.nefcom.net**

Incoming Mail Server

User Name: username@**nefcom.net**

Outgoing Mail Server

✓ My server requires authentication

Congratulations! You have successfully configured your client to send and retrieve @nefcom.net messages.

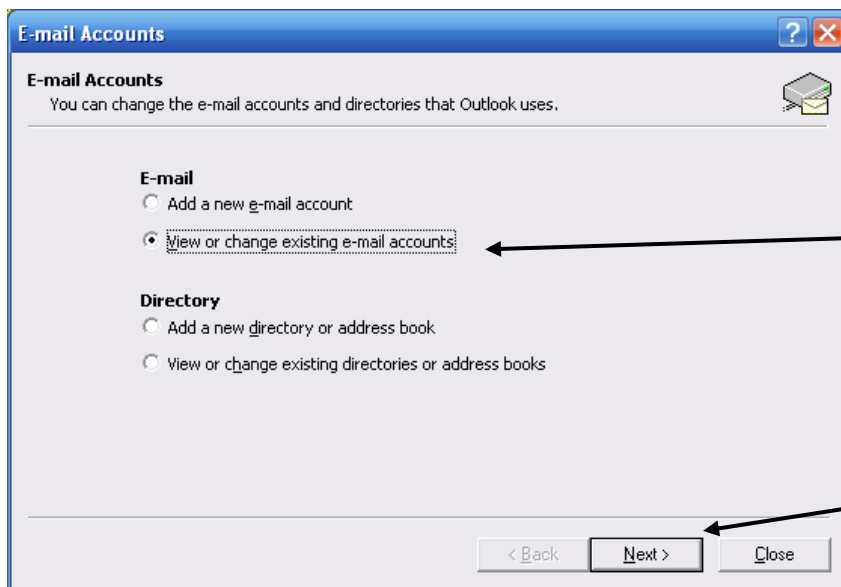
Outlook 2003

Open Outlook 2003



From the Menu Bar

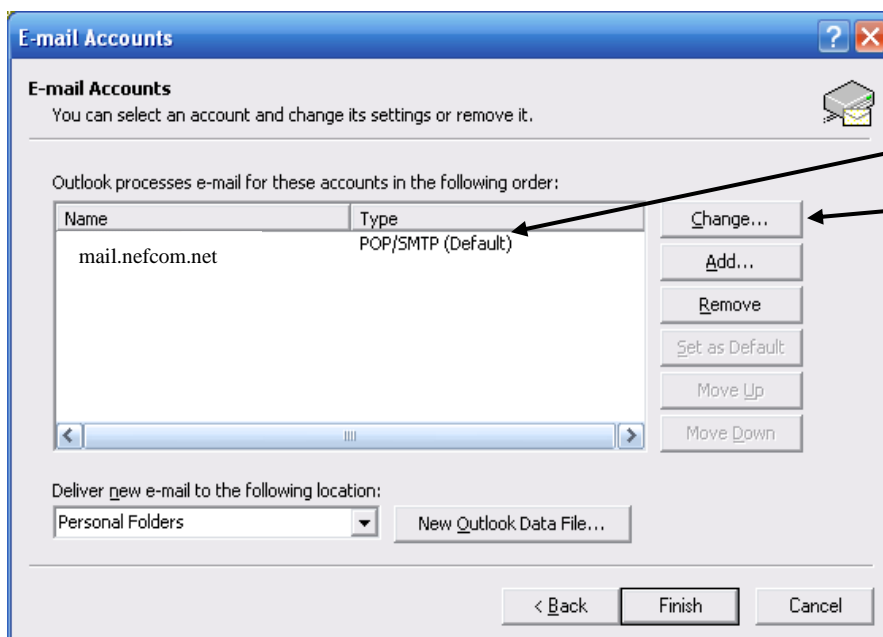
Click on **Tools** to **Email Accounts . . .**



Click on

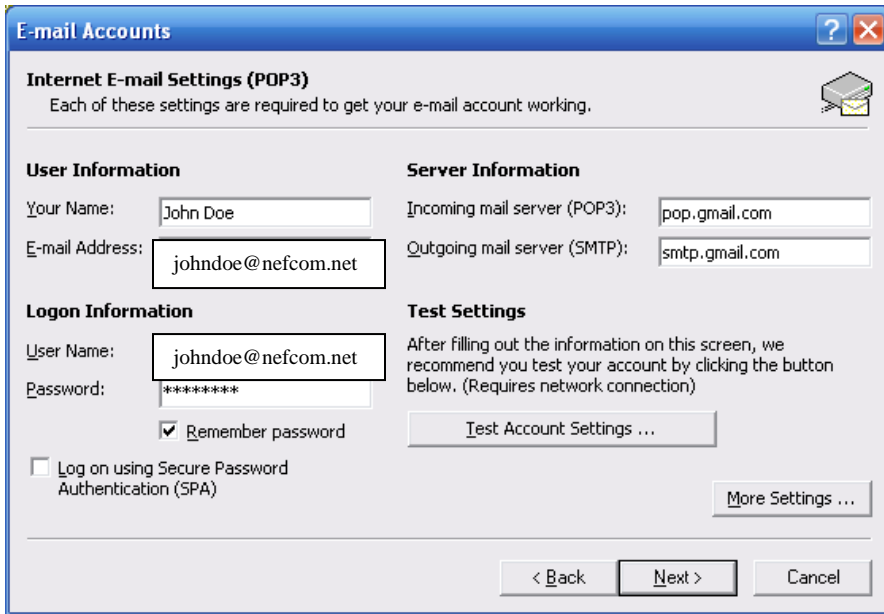
• View or change existing e-mail accounts

Click on the **Next** button



Click on **mail.nefcom.net POP/SMTP (Default)**

Click on the **Change** button



Make Changes in Red:

User Information

E-mail Address: username@nefcom.net

Server Information

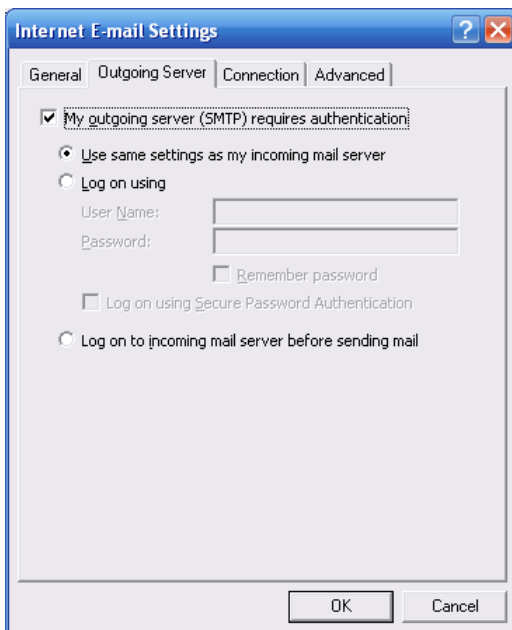
Incoming mail server (POP3): mail.nefcom.net

Outgoing mail server (SMTP): smtp.nefcom.net

Logon Information

User Name: username@nefcom.net

Click on the **More Settings** button



Click on the **Outgoing Server** tab

Make sure to mark:

- ✓ My outgoing server (SMTP) requires authentication
- Use same settings as my incoming mail server



Click on the **Advanced** tab

Make Changes in Red:

Incoming server (POP3): 995

- ✓ This server requires a secure connection (SSL)

Outgoing server (SMTP): 465

****2002 Version Change to 587**

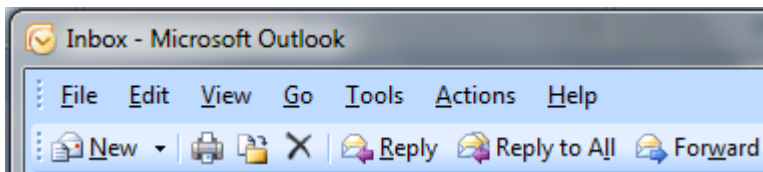
- ✓ This server requires a secure connection (SSL)

Click on **OK**

Congratulations! You have successfully configured your client to send and retrieve @nefcom.net messages.

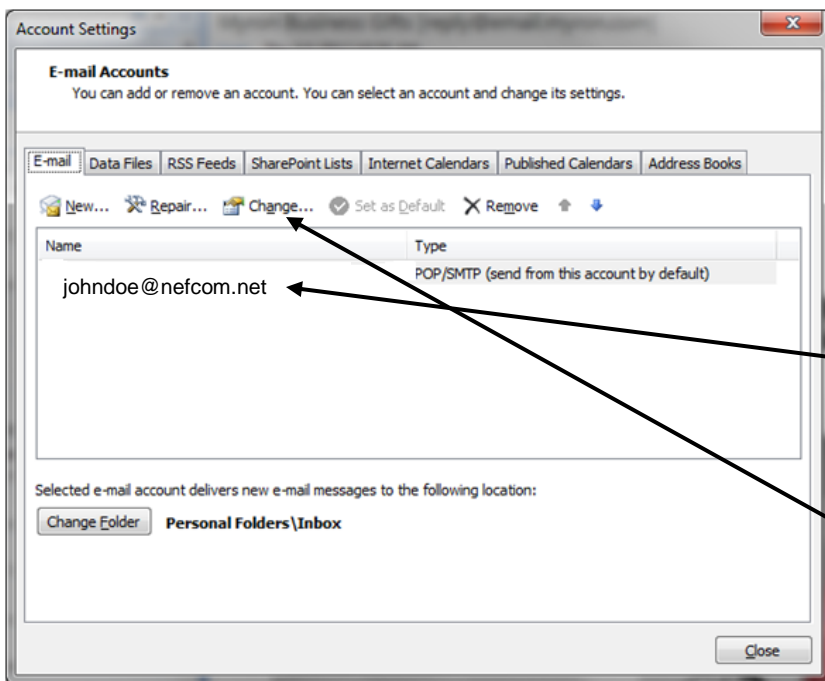
Outlook 2007

Open Outlook 2007

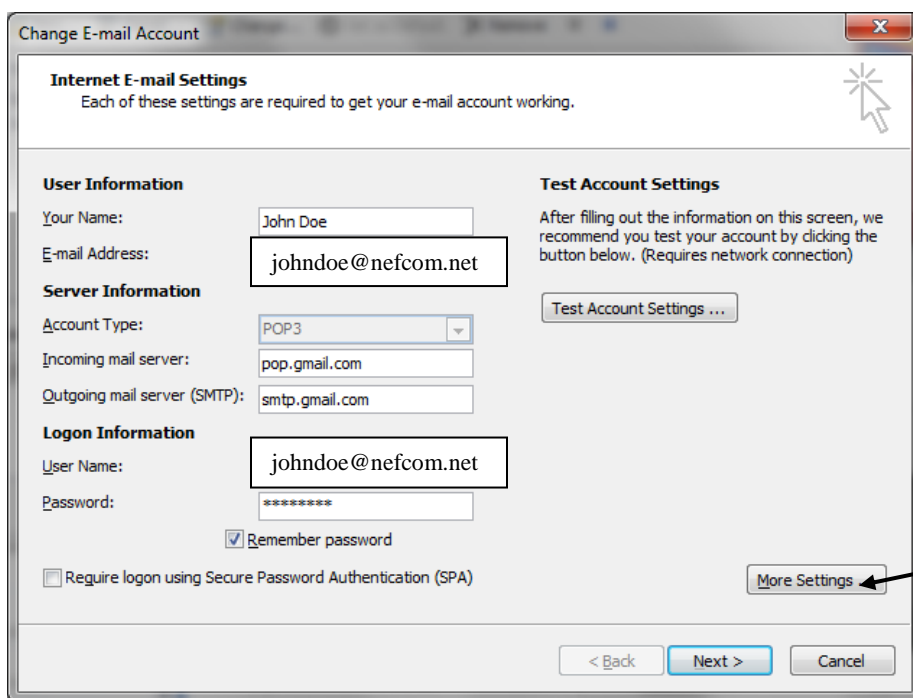


From the Menu Bar

Click on Tools to Account Settings

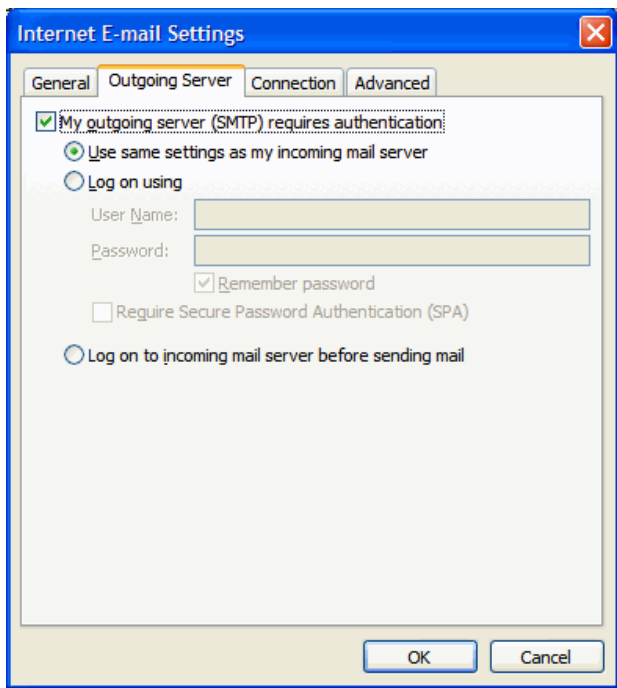


Click on mail.nefcom.net
POP/SMTP (send from this account by default)
Click on the **Change** button



Make Changes in Red:

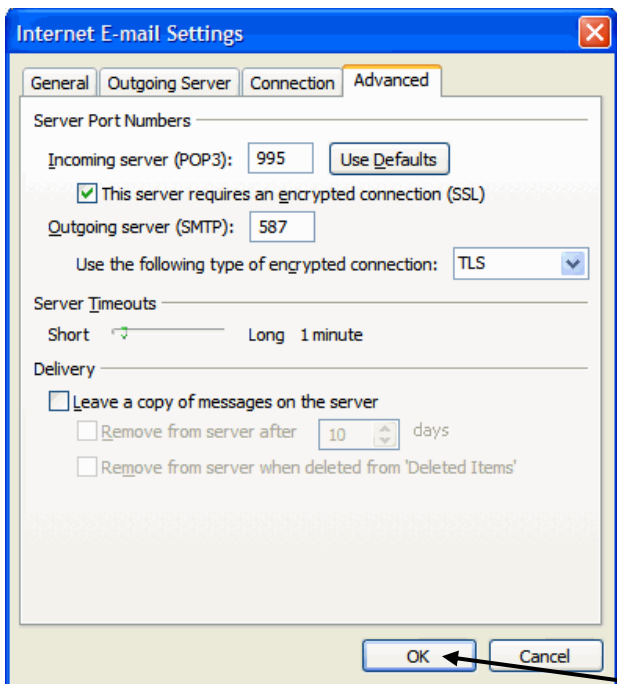
User Information
E-mail Address: username@nefcom.net
Server Information
Incoming mail server: mail.nefcom.net
Outgoing mail server: smtp.nefcom.net
Logon Information
User Name: username@nefcom.net
Click on the **More Settings** button



Click on the **Outgoing Server** tab

Make sure to mark:

- ✓ My outgoing server (SMTP) requires authentication
- Use same settings as my incoming mail server



Click on the **Advanced** tab

Make Changes in Red:

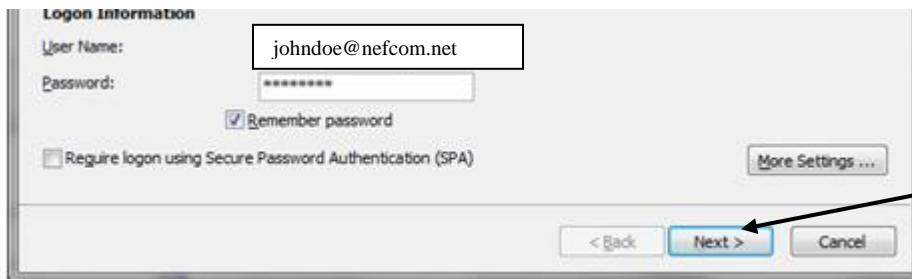
Incoming server (POP): 995

- ✓ This server requires an encrypted connection (SSL)

Outgoing server (SMTP): 587

Use the following type of encrypted connection: **TLS**

Click **OK**.



Click **Next**.

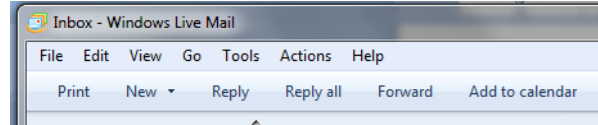
Then click **Finish**.

Congratulations! You have successfully configured your client to send and retrieve @nefcom.net messages.

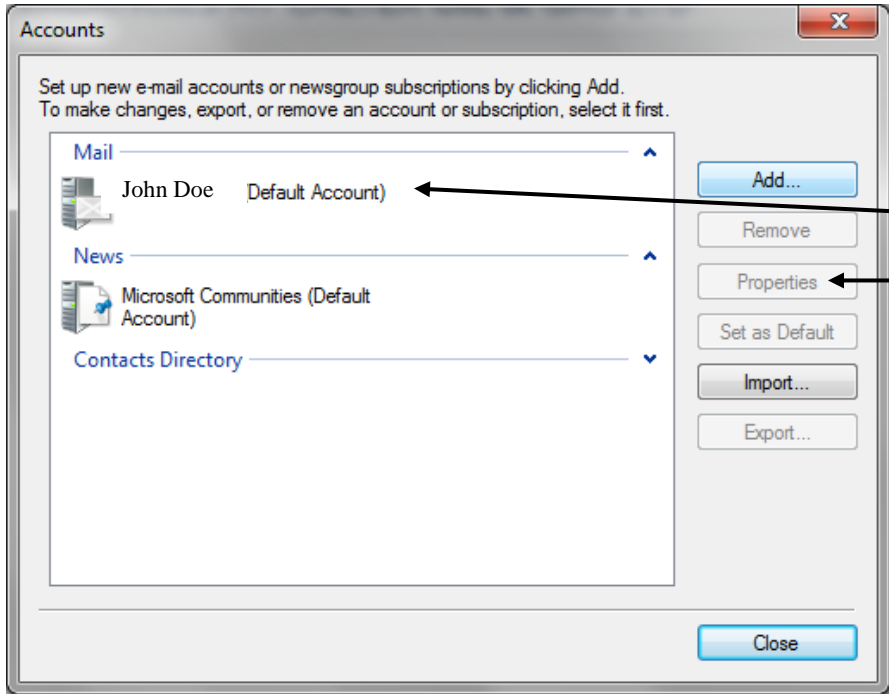
Windows Mail

Open Windows Mail

From the Menu Bar

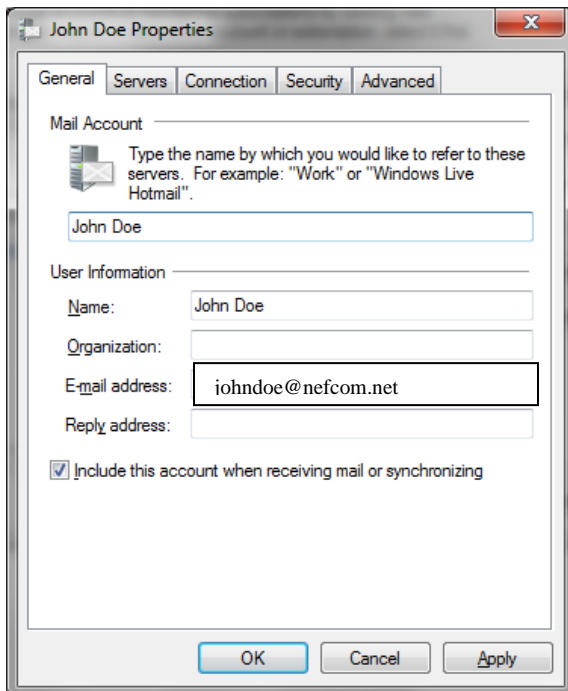


Click on Tools to Account



Click on **mail.nefcom.net (Default Account)**

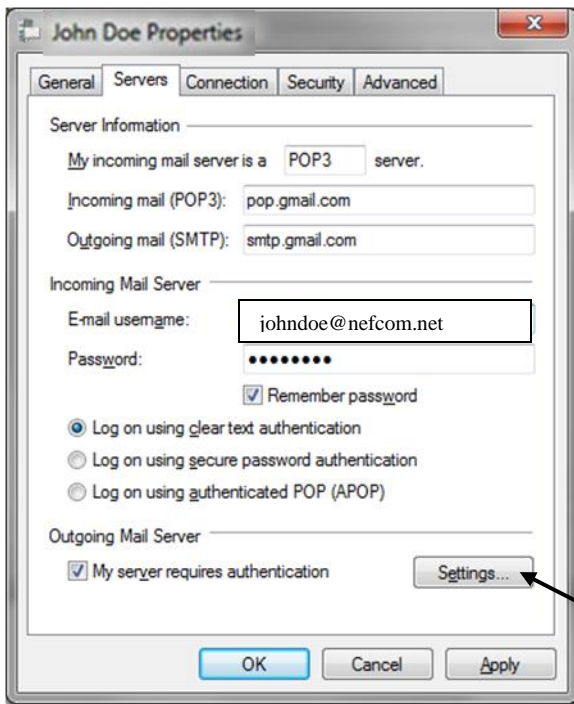
Click on **Properties** button



Make Changes in Red:

User Information

E-mail Address: username@nefcom.net



Click on the **Servers** tab

Make Changes in Red:

Server Information

My incoming mail server is a **POP3** server.

Incoming mail (POP3): **mail.nefcom.net**

Outgoing mail (SMTP): **smtp.nefcom.net**

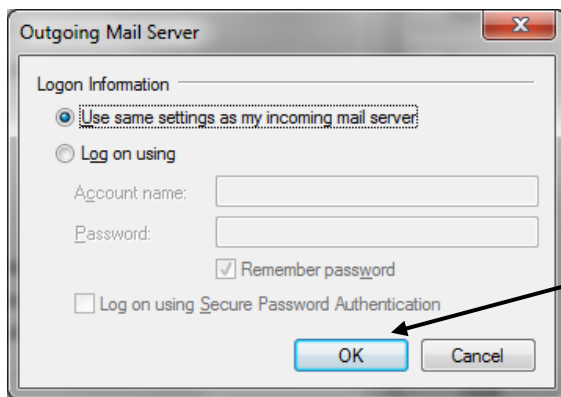
Incoming Mail Server

E-mail username: username@**nefcom.net**

Outgoing Mail Server

✓ My server requires authentication

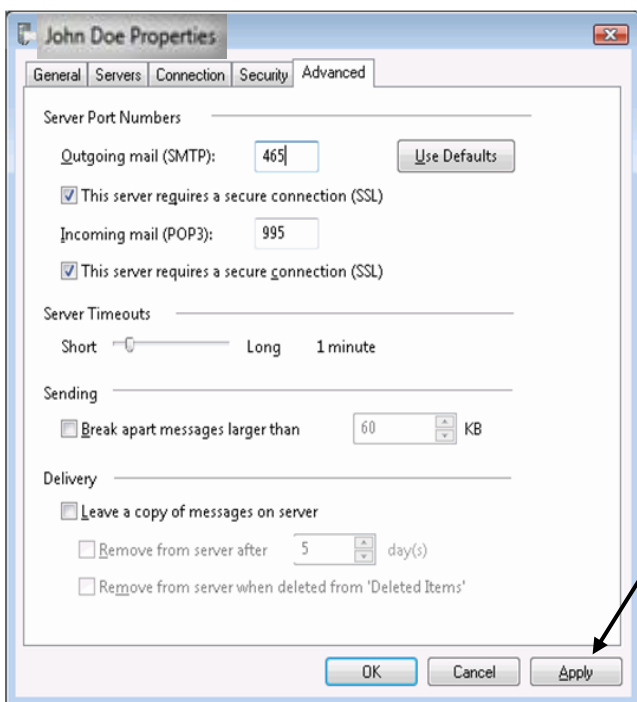
Click **Settings . . .**



Logon Information

- Use same settings as my incoming mail server

Click **OK**



Click on the **Advanced** tab

Change

Outgoing mail (SMTP): 465

****Windows Mail 2010 change to 587**

✓ This server requires an encrypted connection (SSL)

Incoming mail (POP3): 995

✓ This server requires an encrypted connection (SSL)

✓

Click on **Apply**

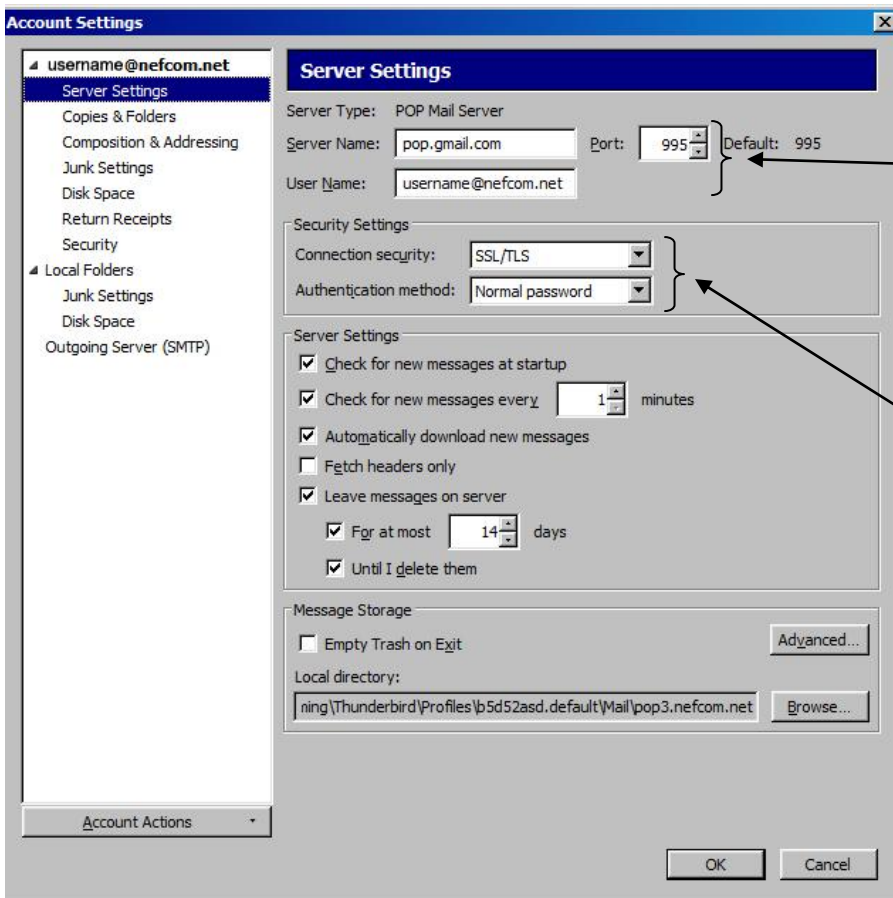
Click on **Ok**

Congratulations! You have successfully configured your client to send and retrieve @nefcom.net messages.

Thunderbird

Open Thunderbird

Click on **Tools** and select **Account Settings**



Click **Server Settings** on the left menu bar

Make Changes in Red:

Server Information

Server name: **mail.nefcom.net**

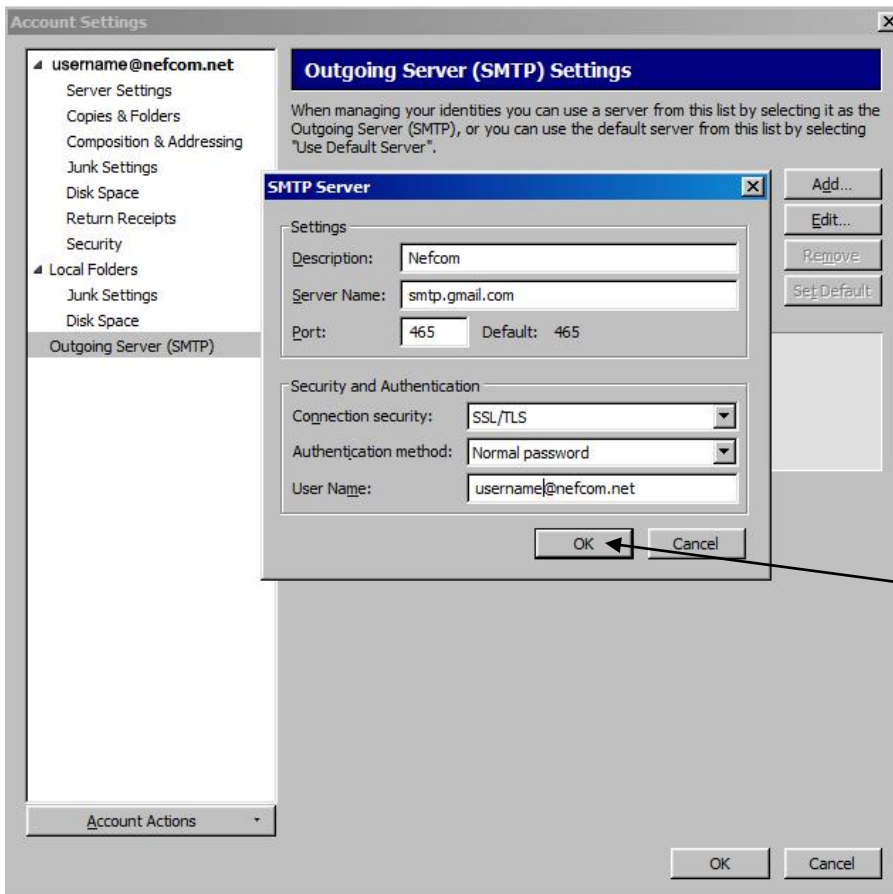
Port: **995**

User Name: **username@nefcom.net**

Security Settings

Connection security: **SSL/TLS**

Authentication Method: **Normal password**



Click **Outgoing Server (SMTP)** on the left menu bar

Make Changes in Red:

Description: **Nefcom**

Server Name: **smtp.nefcom.net**

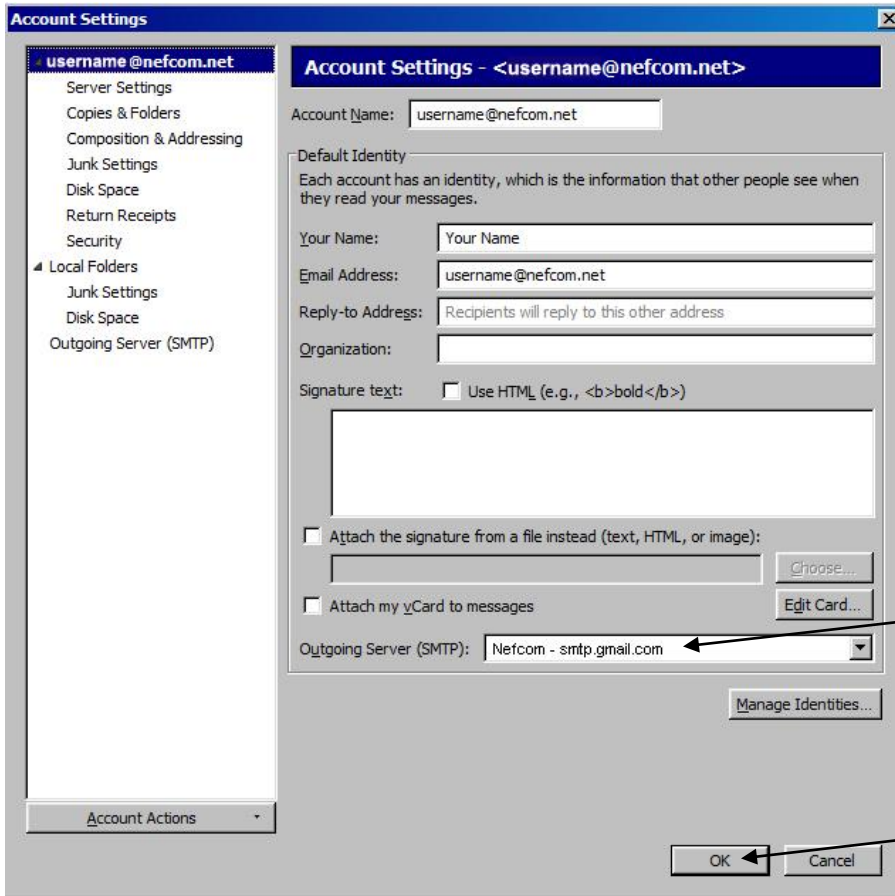
Port: **465**

Connection Security: **SSL/TLS**

Authentication Method: **Normal password**

User Name: **username@nefcom.net**

Click **OK**



Click **username@nefcom.net** on the left menu bar

Make Changes in Red:

Outgoing Server (SMTP):

Nefcom – smtp.nefcom.net

Click **OK**

Congratulations! You have successfully configured your client to send and retrieve @nefcom.net messages.