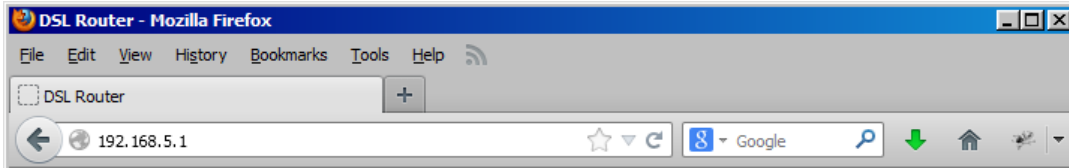


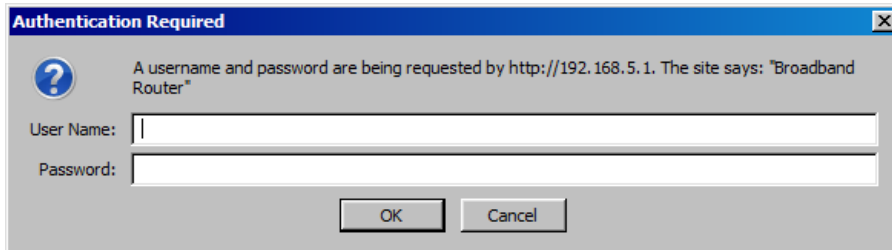
Change the Wireless Password on a Comtrend Router

1. Open a browser (Internet Explorer, Firefox, Google Chrome, or Safari) on your PC or Mac.
2. Type **192.168.5.1** into the address bar and click “Enter”

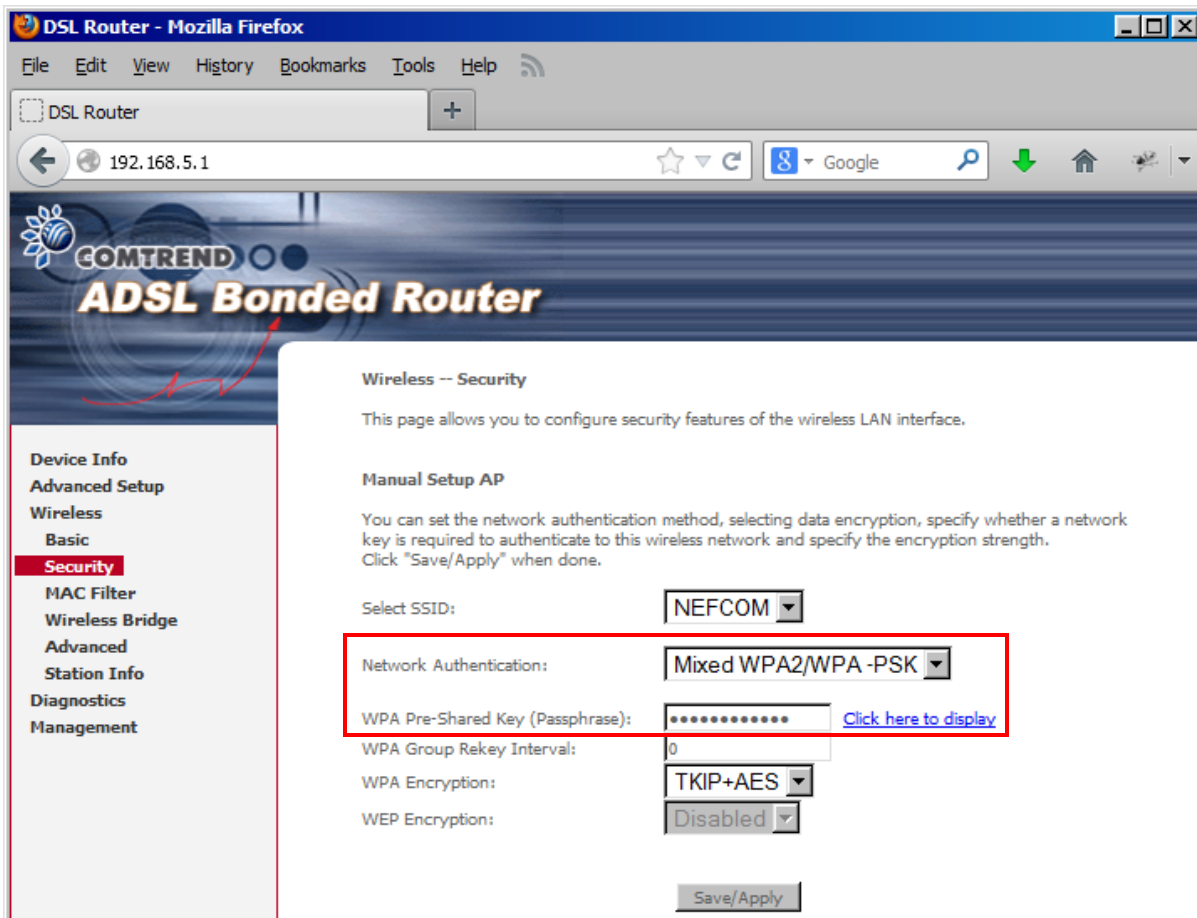


3. Enter the username and password and click “OK”

User Name: **root**
Password: **12345**



4. Once logged in click on “Wireless” and then click on “Security Settings”
5. Select your **Network Authentication** method. We recommend “**Mixed WPA2/WPA-PSK**”
6. Enter your desired password in the box labeled “**WPA Pre-Shared Key (Passphrase)**”



7. Click on “Apply/Save”